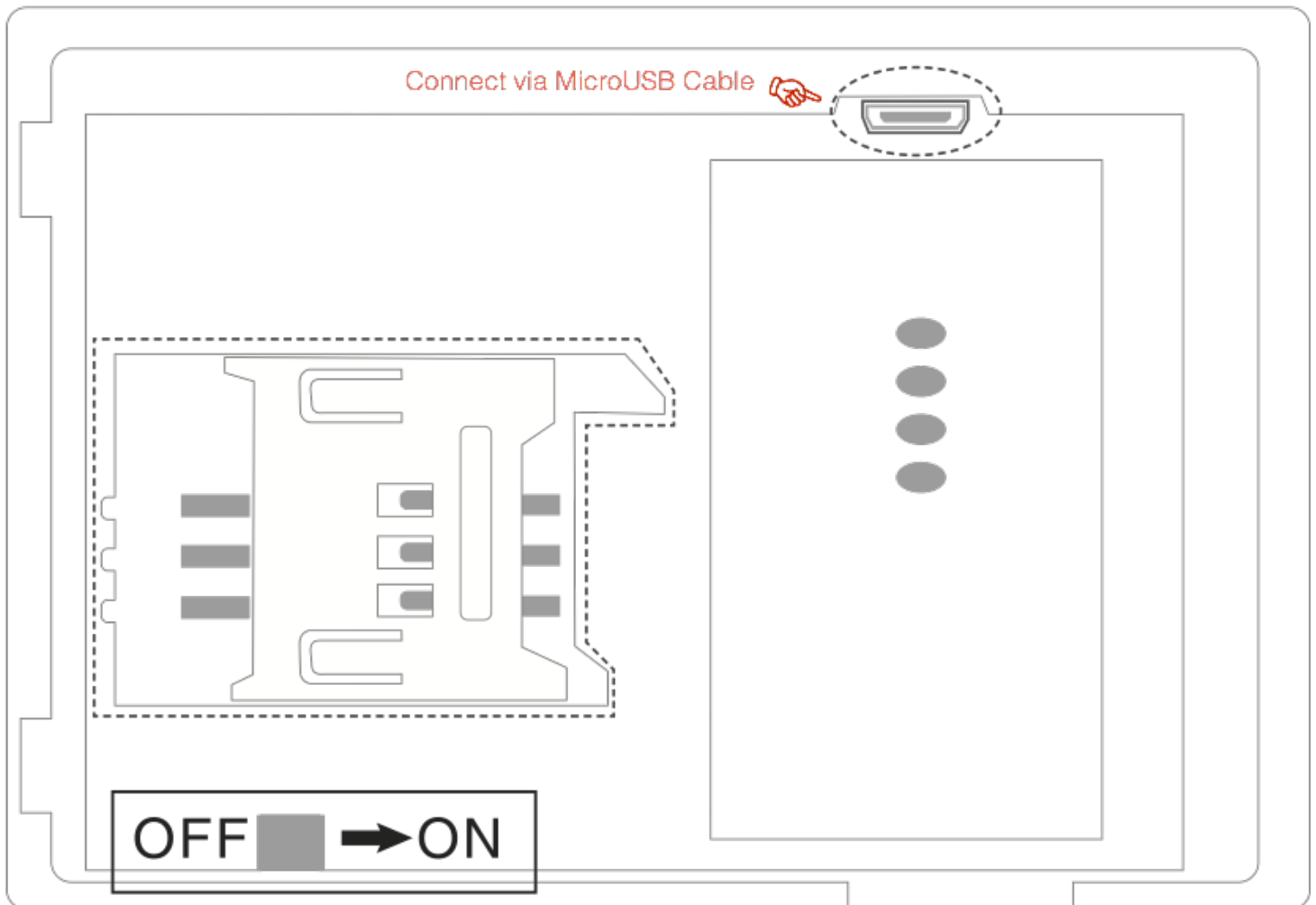


The User Manual For MUT

- 1 | Version: MUT_UMAN_V1.0.EN
- 2 | For Smart Alarm System User Only
- 3 | Last Updated: Aug, 09 ,2016

Before using MUT, you must installed the Alarm Setting Tool with drivers.

Keep your main panel power OFF, connect it to PC via MicroUSB cable.



Turn ON your main panel, launch MUT.



MUT

Select and open the correct COM port in MUT.

Ports: ① COM3:USB-SERIAL CH340 Open ②

RFCOMM Protocol TDI:Bluetooth D

COM3:USB-SERIAL CH340

File Path Browse

Upgrade now

Please don't cut off the power when you are in the procedure of upgrading.

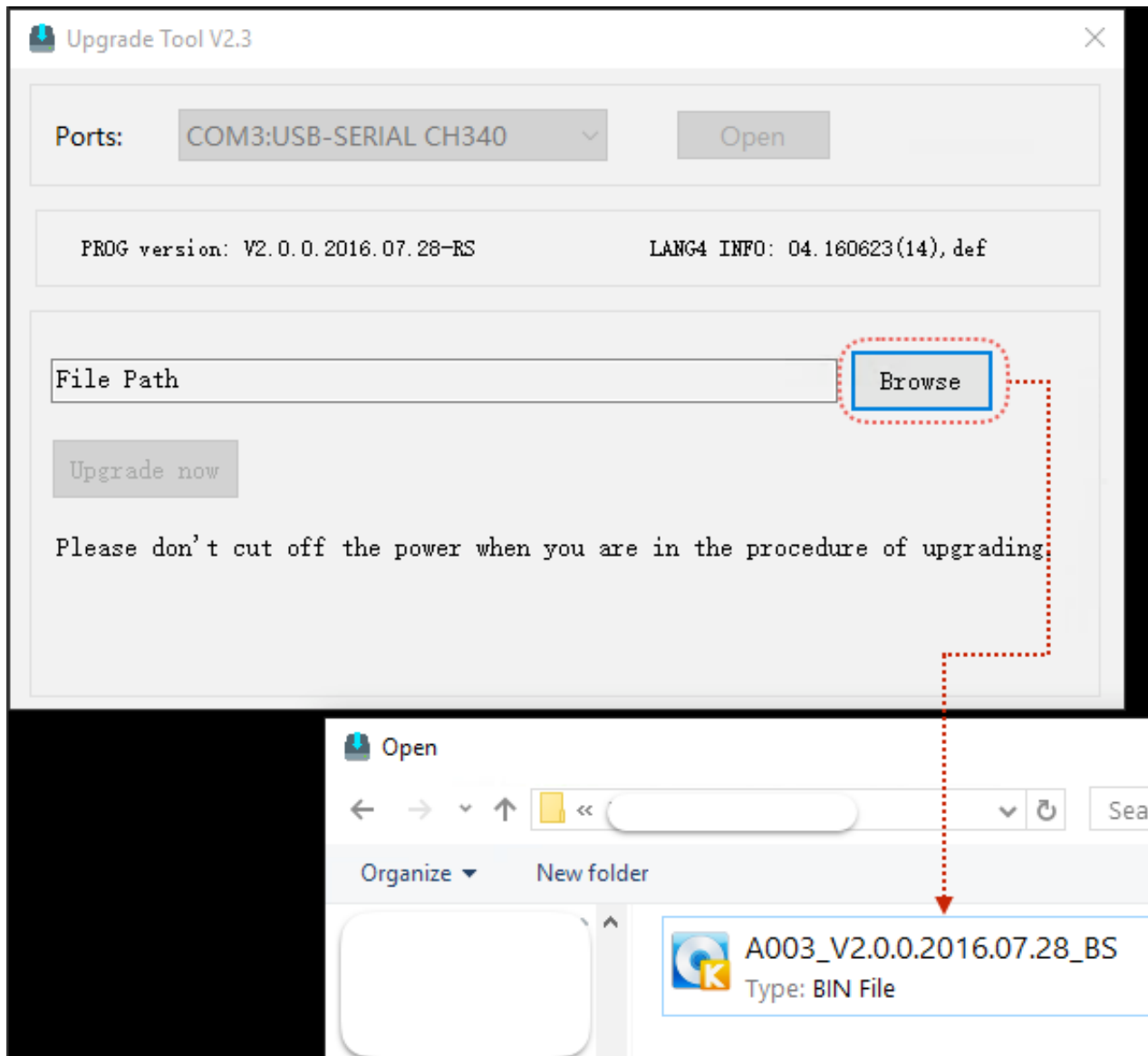
Remember to

choose the one with CH340 marked. After open the port, you will see the current firmware version as PROG:XXX. Make sure the firmware version you are going to update is greater than the main panel's.

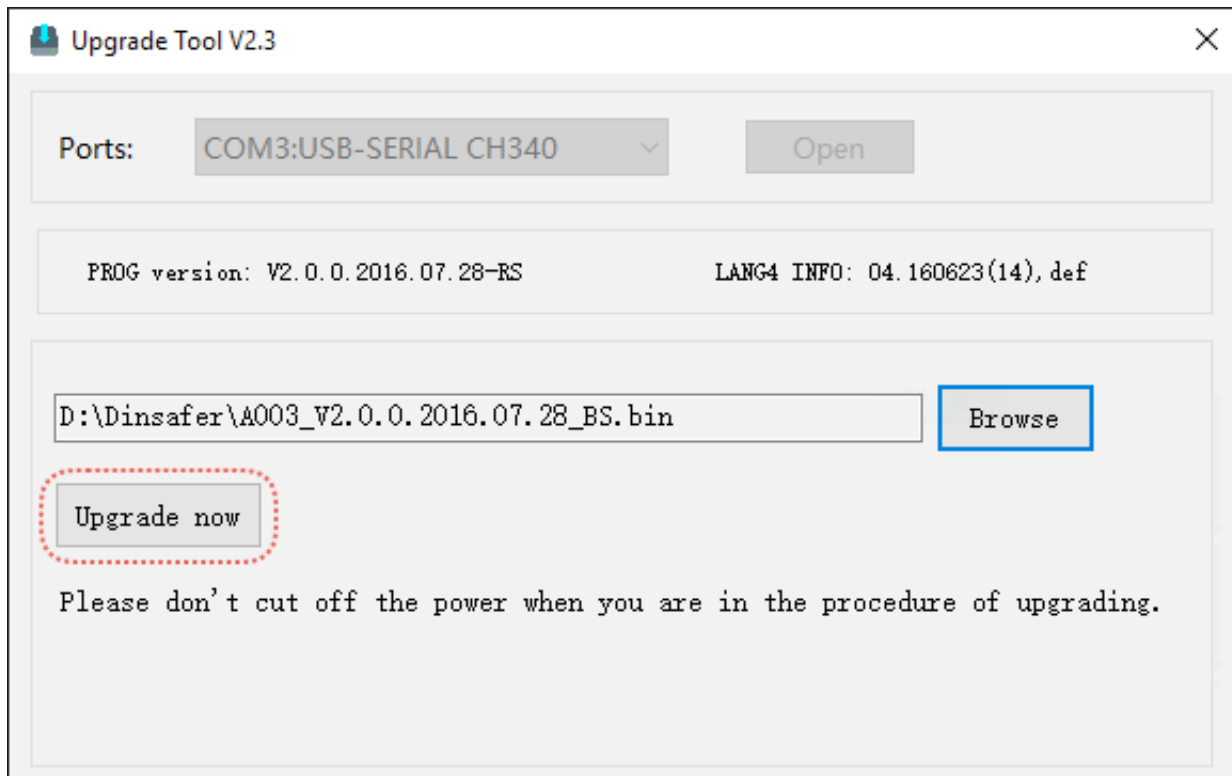
PROG version: V2.0.0.2016.07.28-RS

LANG4 INFO: 04.160623(14), def

Pick the right firmware



Click "Upgrade Now" to update the firmware



Now your main panel is up to date.
