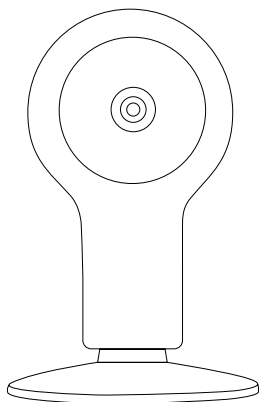

Specification of
Wireless Indoor Camera
(Fixed Type)



Features

Designed for use with all alarm systems, the Smart Camera is a wireless Internet based camera that provides outstanding performance. Its light and cute design fit for all modern families and offices.

This IP camera is easy to configure and operate via official mobile App. It use Acoustic Pairing technology to help the camera connecting to wireless router fast and easy. By global oversea servers, users can easily watch the live video or recorded videos on phone from anywhere anytime.

Great Features:

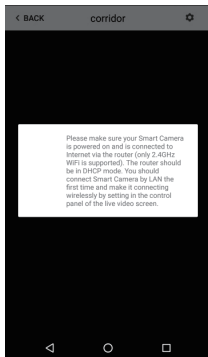
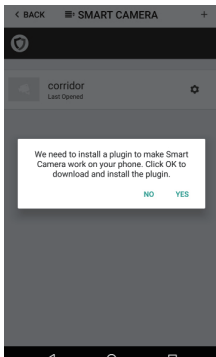
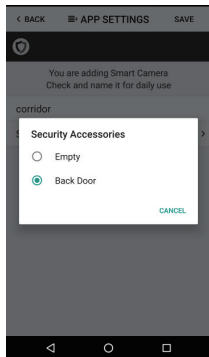
- Fast WiFi setting by sonic wave in App.
- All operations like pairing and setting could be done by mobile App. Fast and easy.
- No password to key-in, it uses unique QR codes for identifying, pairing and visiting. Users can easily regenerate the QR codes to keep unauthorized visitors away.
- Record when motion detected. It can be set to record video in SD card when there is anything moving in the sight of the camera.
- Night Vision. When environment lumen drops to 8L or less, the camera will change to night mode and the LEDs would light up to obtain the clear night vision.
- Up to 64GB TF card storage supported.
- 802.11 b/g/n supported.

Parameters

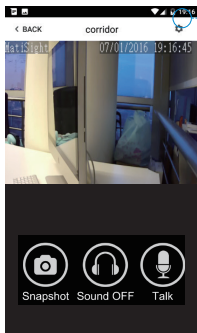
System	
Access Mode	Scanning QR Code to pairing
Power Adapter	DC 5V 1A
P2P	Oversea P2P server
System Security	Only allowed to be visited for QR code owner
WiFi Settings	Convenient and fast WiFi Settings by mobile phone
Storage	Support Max 64GB TF card
Video	
Video compression	H.264,Support three-stream
Resolution	720P(1280×720@22fps)
Sensor	1/4 inch 720p progressive scan CMOS sensor
Lens / View Angle	3.6mm@F1.2/62.6°
Bit Rate	CBR/VBR,output range:128~4096kbps
Night Vision	Dual IR-Cut filter auto switch, 10pcs LEDs,10m IR distance

Audio	
Compression format	G711/AAC
Dual-Way-Audio	Support
Network	
Interface	Pure WiFi
Protocol	TCP/IP,HTTP,TCP,UDP,DHCP,DNS, DDNS,NTP,UpnP,RTSP,P2P etc.
Online Visitor	Support 4 users to watch online video synchronously
WiFi Standard	Support IEEE 802.11b/g/n
Motion Detect	Support record video when motion is detected
Software	
App Software	iOS(5.0 or above),Android(2.3 or above)
Certifications	
CE	EN 301 489-1 V1.9.2 (2011-09) EN 301 489-17 V2.2.1 (2012-09) EN 62479:2010 EN 62479:2010 EN 60950-1:2006+A11:2009+A1:2010+A12:2011+A2:2013 EN 300 328 V1.8.1
RoHS	IEC 62321 Ed 1.0:2013

Manage and Operate the Camera.



- Tap + to scan QR codes printed on the back cover of the camera.
- You can easily rename the camera for daily use.
- You can set up rule to allow the system to inform you when the pointed sensor trigger alarm, so you can check the live video immediately.
- You might would be asked to install a video plug-in for visiting the camera during the first time using.



Smart Camera Settings

Show | Share Current Code

Generate New QR Code

SYNC with phone's timezone

Wifi Setting

Horizontal Flip



Vertical Flip



Format your SD card

Motion Detect Record



View Record Video

CANCEL

Show | Share Current Code:

Show the current QRCode of Smart Camera, you can share it via MMS or other apps.

Generate New QR Code:

Generate a new QRCode of Smart Camera, users who is still using the old QRCode would fail when visiting this Smart Camera.

SYNC with phone's timezone:

SYNC with phone's timezone. Synchronize the timezone with your phone's.

Wifi Setting:

Connect IP camera wirelessly.

Horizontal & Vertical Flip:

Flip the screen to view correctly when the Smart Camera was installed upside-down.

Format Your SD card:

Erase and make your SD card recordable.

Motion Detect Record:

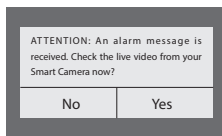
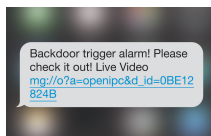
Automatically record video when any motion is detected (5s before + 15s after).

View Record Video:

List all the recorded video on your SD card, can be sorted by date. Click to play.

- **Snap Shot:** Snap shot the current screen and save it to phone album.
- **Sound:** Listen to the sound around the camera.
- **Talk:** Talk while tapping and it plays immediately via camera speaker.

Appendix: How The Camera Works When Alarm Occurs?



1. If a thief intrudes and triggers some accessory alarm, the emergency contacts would get informing SMS and alarming call right after that.
2. The App captures the informing SMS right after that and reminds the user to check live video from the camera paired before. Users get informed immediately even when the App is exited.
3. Just one tap to show you the real-time video! The thief is nowhere to hide!

Camera Settings

Pairing With Main Panel


- Use App to scan the QR code

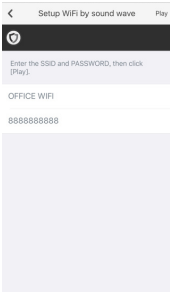
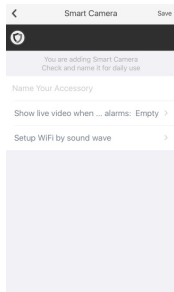
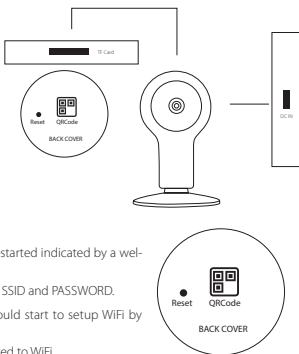
Power Up

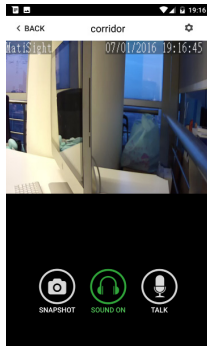
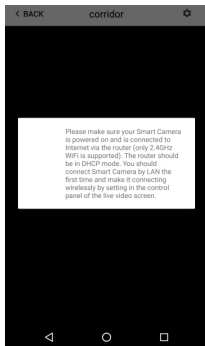
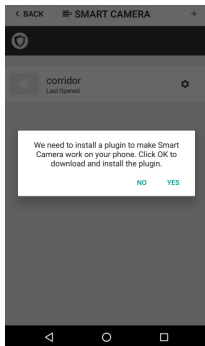
- Insert power cable into the Micro-USB slot on the round edge.
- The camera will power up indicated by a welcome voice.

WiFi Settings

You can set up WiFi by using sonic wave pairing after resetting or the first time starting.

- Reset the camera. Wait for few seconds until the camera has restarted indicated by a welcome voice.
- Tap  in the camera list, tap [Setup WiFi by sound wave], enter SSID and PASSWORD.
- Make sure the phone is not muted, tap [Play]. The phone would start to setup WiFi by playing a special clip of sound.
- Wait until a confirming voice indicates the camera has connected to WiFi.





Watch Live Video by App

- Tap Camera listed in the App.
- You might need to install a plugin in the first using. Please follow the guide in App to install it.
- After plugin is installed, tap it again and watch the live video or control the camera like moving or talking, etc.

Use TF Card for Video Recording

- If the SD card is new or needs to be erased, please tap [Format your SD card] to make it available for recording.
- Switch on [Motion Detect Record] to record videos when motion is detected by Smart Camera's lens.
- The video will be recorded as 640*480 and lasted for 20s to 30s. When the SD card is full, the old files will be automatically deleted for recording the latest one.

Play Recorded Videos

- Tap [View Record Video] to list all recent videos.
- Tap the records to play online.
- You can tap [Choose Date] to filter videos by date.

Synchronize The Timezone

- Tap [SYNC with phone's timezone]
- When your phone's timezone changed, please do it again*

Flip The Live Video

- You can flip the video horizontally or vertically by turning on/off those buttons in setting menu.

QR Code Configure	>	2015-03-04-094237-av-2.avi
SYNC with phone's timezone	>	2015-03-04-094328-av-2.avi
Wifi Setting	>	2015-03-04-094424-av-2.avi
Horizontal Flip	<input type="checkbox"/>	2015-03-04-094518-av-2.avi
Vertical Flip	<input type="checkbox"/>	2015-03-04-094613-av-2.avi
Format your SD card	>	2015-03-04-094730-av-2.avi
Motion Detect Record	<input checked="" type="checkbox"/>	2015-03-04-094844-av-2.avi
View Record Video	>	2015-03-04-094949-av-2.avi
		2015-03-04-095045-av-2.avi
		2015-03-04-095131-av-2.avi
		2015-03-04-095319-av-2.avi

FAQ

I've Already Connect My Camera to WiFi, But I Can't Connect It in App.

- Make sure you used the right QR code during the pairing section.
 - Make sure you are using the 2.4GHz WiFi, the camera can't support 5GHz yet. The camera supports IPV4 only.
 - DHCP Server/Services should be enabled on the router setting.
 - If you are using firewall, all ports from 10000 to 65535 of your camera's IP address should be allowed to in/out in the firewall rule. We recommend you to allow the camera for any data connection.
 - Try to reset the camera and set up Wi-Fi connection again by App.
-

I Still Can't Visit My Camera in App.

If all methods has been tried but still has some issues, please try using your mobile phone to create a 2.4GHz hotspot, and set-up the camera to connect to this hotspot for testing. If the camera can connect to the hotspot, the problem should be caused by your router.

I Can't Save the Snap Shots.

App will need to access to your phone's album for saving snapshots. The authorization might need you to approve while using the function for the first time in some phones. If you mis-click the 'No' option during the authorization, you might need to enable it in the system setting menu.

How to Reset My Camera?

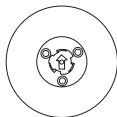
PLEASE MAKE SURE YOU CLEARLY KNOW THE RESULT OF RESETTING:

ALL DATA WILL BE ERASED INCLUDING THE INTERNET SETTINGS AND RECORDED VIDEOS.

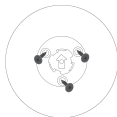
- Press the reset button with a pin after the camera has started until you hear a confirming voice indicates the camera has been reset.
 - Wait for few seconds until you hear a welcome voice.
 - You need to set up WiFi after resetting.
-

How to Mount the Camera to The Wall

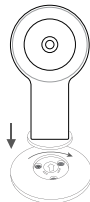
- Separate the bottom from the camera
- Use screws to fix the bottom to the place you need
- Join the body of the camera to the bottom



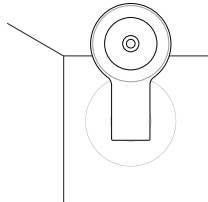
01



02



03



04