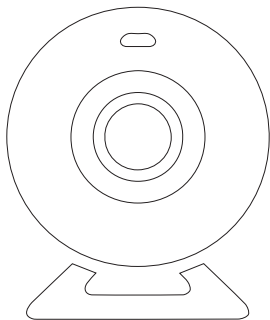

Specification of
Wireless Indoor Camera
(Pan-Tilt Type)



Features

With Wifi and LAN network supported, This camera can be easily visited globally. It perfectly works with the smart alarm system and the mobile App. Users can visit and control the camera via App.

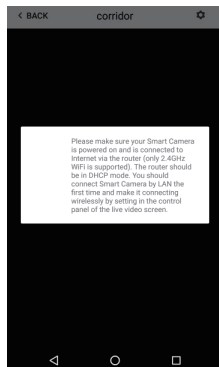
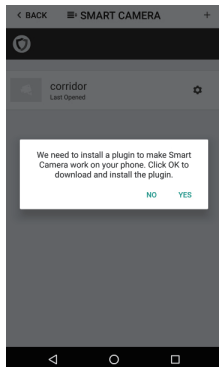
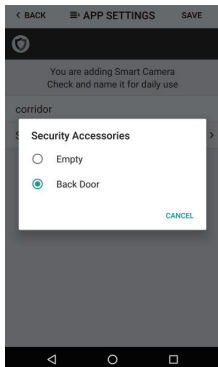
Great Features:

- High performance. Like 720p high resolution, 355° pan, 120° tilt and night vision, etc.
- Scan QR Code to pair. Like adding other accessories, run out of the box.
- Control everything by phone. Like setting WiFi, formatting SD card, setting motion detect or watching recorded videos remotely.

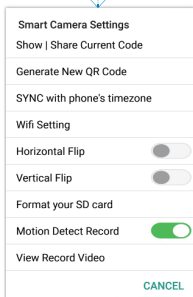
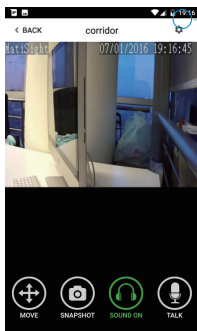
Parameters

Video	
Video compression	H.264
Frame Rate	5fps、10fps、15fps、20fps、25fps (auto adjustable)
Bit Rate	Dynamic adjustment from 128~4096kbps
Resolution	720P(1280×720),VGA(640×360),QVGA(320×180) (auto adjustable)
Sensor	1/4 inch 720p progressive scan CMOS sensor
Night Vision	Dual IR-Cut filter auto switch, 12pcs LEDs,10m IR distance
Pan/Tilt	Angle Vertical 120°,Horizontal 355°
Audio	
Compression Format	G711/AAC
Dual-Way-Audio	Support
Input	One Built-in -32dB microphone,adjustable volume:0-31
Output	1 Channel Line out (3.5mm Audio jack) & Built-in speaker(8Ω1W)
System	
Compatibility	Designed for smart alarm system and the app
Operating System	Embedded Linux OS
Process	Built-in ARM9@Max.440MHz and high speed video co-processor
Lens/View	Angle 3.6mm@F1.2/62.6°
Motion Detect	Support motion detect and auto record.
Storage	Support Max 64GB TF card
Network	
Protocol	TCP/IP, HTTP, TCP, UDP, DHCP, UpnP, RTSP, P2P etc.
WiFi Standard	Support IEEE 802.11b/g/n
Interface	1xRJ45 10/100M ethernet interface

Manage and Operate the Camera



- Like adding accessories, tap + to scan QR code on camera then name it.
- If you want to be informed to check the real-time video (like the camera facing the door) when alarm is trigger by certain accessory (like the door/window sensor installed on the front door), you can use [inform when ... alarms] and tick the related accessories.
- You would be asked to install a video plug-in the first time visiting to the camera. It won't bother you anymore.



Show | Share Current Code:

Show the current QRCode of Smart Camera, you can share it via MMS or other apps.

Generate New QR Code:

Generate a new QRCode of Smart Camera, users who is still using the old QRCode would fail when visiting this Smart Camera.

SYNC with phone's timezone:

SYNC with phone's timezone. Synchronize the timezone with your phone's.

Wifi Setting:

Connect IP camera wirelessly.

Horizontal & Vertical Flip:

Flip the screen to view correctly when the Smart Camera was installed upside-down.

Format Your SD card:

Erase and make your SD card recordable.

Motion Detect Record:

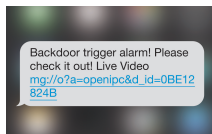
Automatically record video when any motion is detected (5s before + 15s after).

View Record Video:

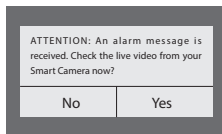
List all the recorded video on your SD card, can be sorted by date. Click to play.

- **Move:** Watch by dragging on the screen or tapping Move button and control with joystick.
- **SnapShot:** Snapshot the current screen and save it to phone album.
- **Sound:** Listen to the sound around smart camera.
- **Talk:** Talk while tapping and it plays immediately via camera speaker.

Appendix: How The Camera Works When Alarm Occurs?



1. If a thief intrudes and triggers some accessory alarm, the emergency contacts would get informing SMS and alarming call right after that.



2. The App captures the informing SMS right after that and reminds the user to check live video from the Smart Camera paired before. Users get informed immediately even when the App is exited.

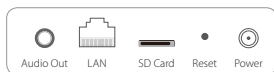


3. Just one tap to show you the real-time video! The thief is nowhere to hide!

Setting Up Camera

Pairing with Main Panel

- Please use App to scan the QR code to pairing Smart Camera.
- The QR code is printed on the bottom of Smart Camera.



Back View of P-series
(Interface differs for each series)

Insert Lan Cable and Power Up

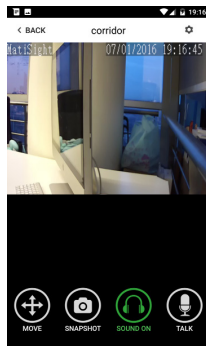
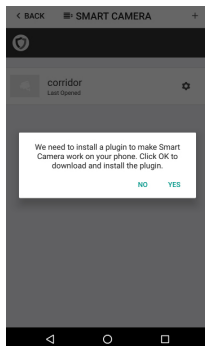
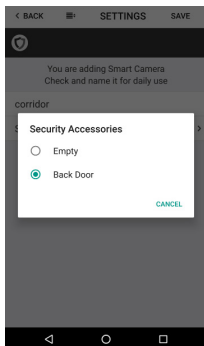
- Please always connect Smart Camera with LAN before powering up when you first using it.
- Make sure the the settings like DHCP Server and UPNP are enabled on your router.
- Connect the power cable, the Smart Camera will run some diagnostic processes like rolling the camera. When it stops rolling, the startup is completed.



Bottom

Watch Live Video by App

- Tap Camera listed in the App.
- You might need to install a plugin in the first using. Please follow the guide in App to install it.
- After plugin is installed, tap it again and watch the live video or control the camera like moving or talking, etc.



Connect Camera to Wireless Network

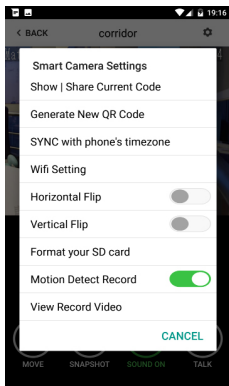
- The SSID will be automatically filled as your phone's , please type in the password and tap [Confirm].
- Unplug the LAN cable, restart your Smart Camera by plugging out/in the power cable.
- If you saved the wrong password and restarted the Smart Camera, please reconnect it by LAN again, then repeat the setting process above.

Use SD Card for Video Recording

- If the SD card is new or needs to be erased, please tap [Format your SD card] to make it available for recording.
- Switch on [Motion Detect Record] to record videos when motion is detected by Camera lens.
- The video will be recorded as 640*480 and lasted for 20s to 30s. When the SD card is full, the old files will be automatically deleted for recording the latest one.

Play Recorded Videos

- Tap [View Record Video] to list all recent videos.
- Tap the records to play online.
- You can tap [Choose Date] to filter videos by date.



2015-03-04-093821-av-2.avi

2015-03-04-094237-av-2.avi

2015-03-04-094328-av-2.avi

2015-03-04-094424-av-2.avi

2015-03-04-094518-av-2.avi

2015-03-04-094613-av-2.avi

2015-03-04-094730-av-2.avi

2015-03-04-094844-av-2.avi

2015-03-04-094949-av-2.avi

2015-03-04-095045-av-2.avi

2015-03-04-095131-av-2.avi

2015-03-04-095319-av-2.avi

Synchronize the Timezone with Your Phone's

- Tap [SYNC with phone's timezone]

When your phone's timezone changed, please do it again to keep both timezone the same.

FAQ

I've Already Connect My Camera with LAN, But I Can't Connect It in App

Please make sure your router has successfully connected to Internet.

DHCP Server/Service should be Enable on the router. UPNP should be Enable too.

Your phone's data plan should be available. Some carriers restricts the p2p connection protocol, try using App in the same Wi-Fi with Smart Camera to figure out the problem.

If you still can't connect it, try another router if possible. Some routers' build-in firewall also interfere the connection.

How to Reset The Wi-Fi Settings?

Reconnect it to LAN and re-type the password in Smart Camera setting first, always.

Unplug the LAN cable after Wi-Fi setting is completed and restart Smart Camera.

Smart Camera can't support 5G Wi-Fi now, please use 2.4G wireless routers instead.

I Can't Save the Snapshots.

App will need to access to your phone's album for saving snapshots. The authorization might need you to approve while using the function for the first time in some phones. If you mis-click the 'No' option during the authorization, you might need to enable it in the system setting menu.

How to Reset My Camera?

PLEASE MAKE SURE YOU CLEARLY KNOW THE RESULT OF RESETING:

ALL DATA WILL BE ERASED INCLUDING THE INTERNET SETTINGS AND RECORDED VIDEOS.

Power up your Smart Camera, wait until the camera stops rolling.

Hold the reset button for a while until the camera starts rolling again. Release the button then the Smart Camera would be reset.