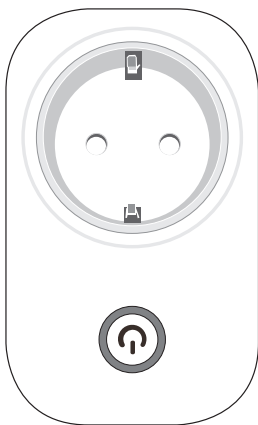


---

# Specification of Wireless Smart Plug

---



*\* We offer Smart Plug in global standards like CEE, GB, SAA, FC, etc.  
CEE standard is used for reference only in this document.*

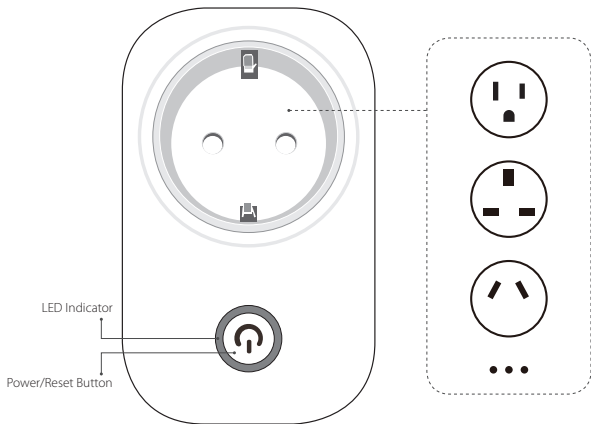
## Features

The smart plug is an accessory of smart alarm system. It is easy and reliable to use with elegant design. The smart plug could be controlled remotely by App. By the "Follow Me" feature of the system, the smart plug could also be automatically turned ON/OFF according to system or accessory events, or by preset time schedule.

## Parameters

• Power Rating	MAX2500W
• Rated Input	AC 220V-250V/50-60Hz/MAX10A
• Rated Output	AC 220V-250V/50-60Hz
• Distance	200 m
• Transmission Frequency	433.92MHz
• Working Temperature	-20 °C ~50 °C
• Humidity	≤90%rh (non-condensing)
• Weight	88.7 g
• Dimension	102*62.5*29.7 mm (L*W*H)

## Appearance



*\* We offer Smart Plug in global standards like CEE, GB, SAA, FC, etc.  
CEE standard is used for reference only in this document.*

## Pairing With Main Panel by App

1. Make sure your Smart Plug is plugged into the outlet. Check the LED indicator if it is ON. If not, press the power button to ensure the smart plug has been turned ON.

2. Launch App. Scan the QR Code printed on the smart plug. Finish the rest parts like renaming, etc.

3. PRESS [SAVE] on App. The pairing would be finished when the LED indicator blinks several times. The system would inform you the pairing result by SMS.

*Hint: The main panel and the smart plug should be ON during the whole pairing process.*

## Use The Smart Plug

### 1. Turn ON/OFF.

In the App , you could easily turn ON/OFF by tapping buttons in the Smart Plug section or in the main control panel.

### 2. Setup Follow Me Strategy or Time Schedule

Smart plug could be automatically turned ON/OFF according to the system or accessory events, like ARM/DISARM/ALARM/TRIGGERED/TIME SCHEDULE etc. Users could easily setup these strategies in App, click the name in the Smart Plug List to modify settings.

### 3. Reset The Smart Switch

Keep holding the reset button in 10 seconds, the smart switch would be reset as the LED indicator keep flashing.